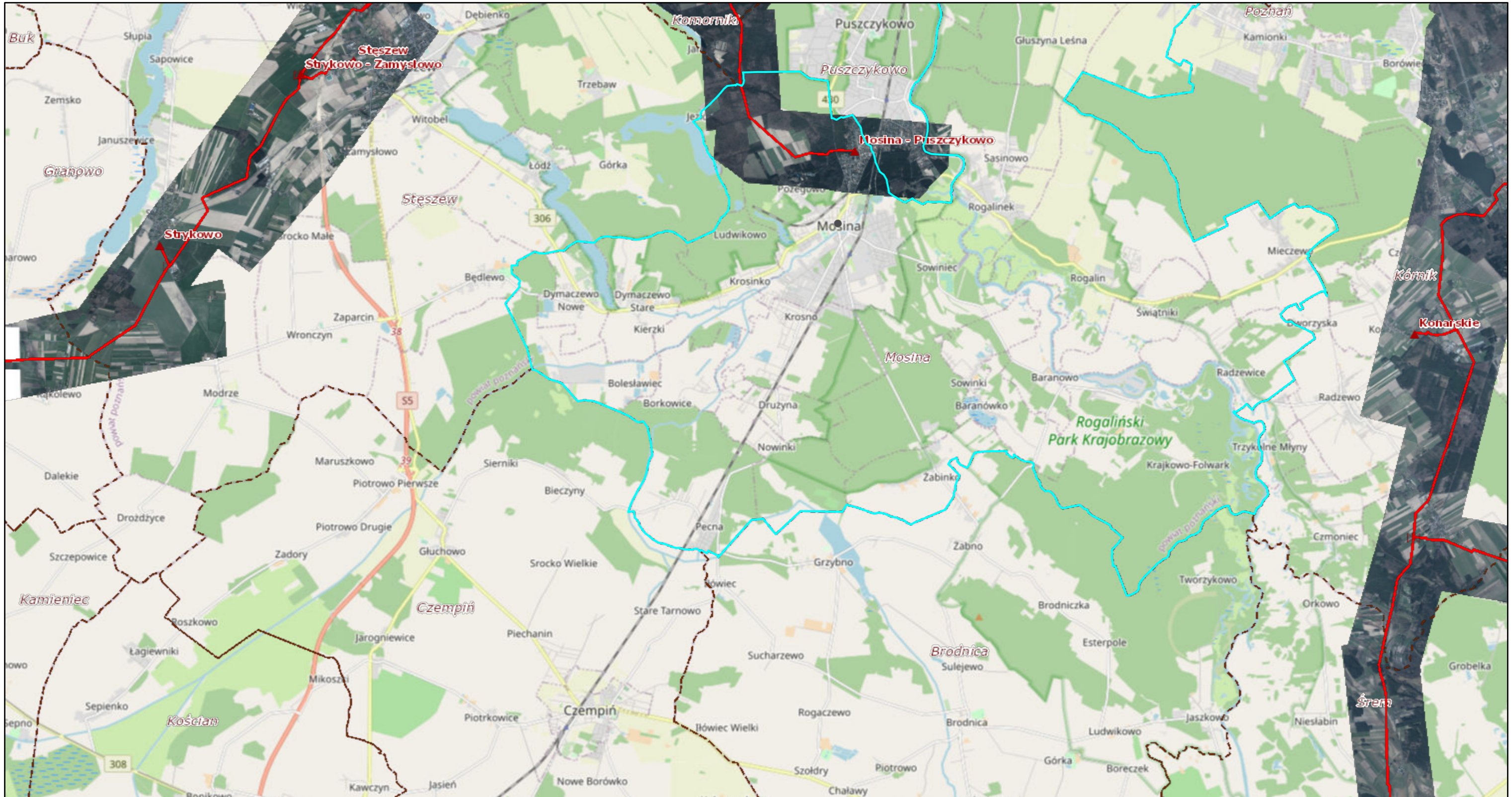


Mapa z PortalGIS GS

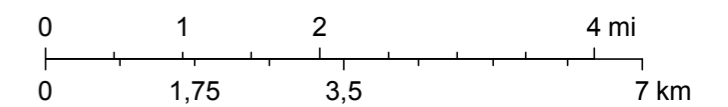


19.03.2021 10:20:11

1:144 448

- | | | | | | |
|--|---------------------------|--|---------------------|--|---------------|
| | Zespoły zaporowo-upustowe | | gazociągi | | Red: Band_1 |
| | Stacje gazowe | | Gazociąg tranzytowy | | Green: Band_2 |
| | Węzły gazowe | | Oddziały | | Blue: Band_3 |
| | Tłocznie | | gminy | | |

Orto2016_10cm



© OpenStreetMap (and) contributors, CC-BY-SA